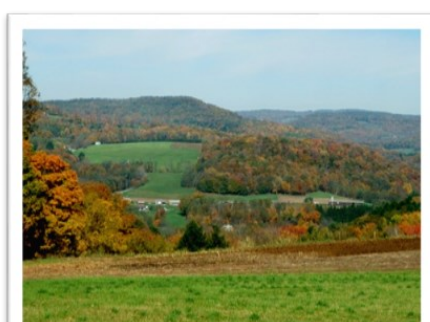
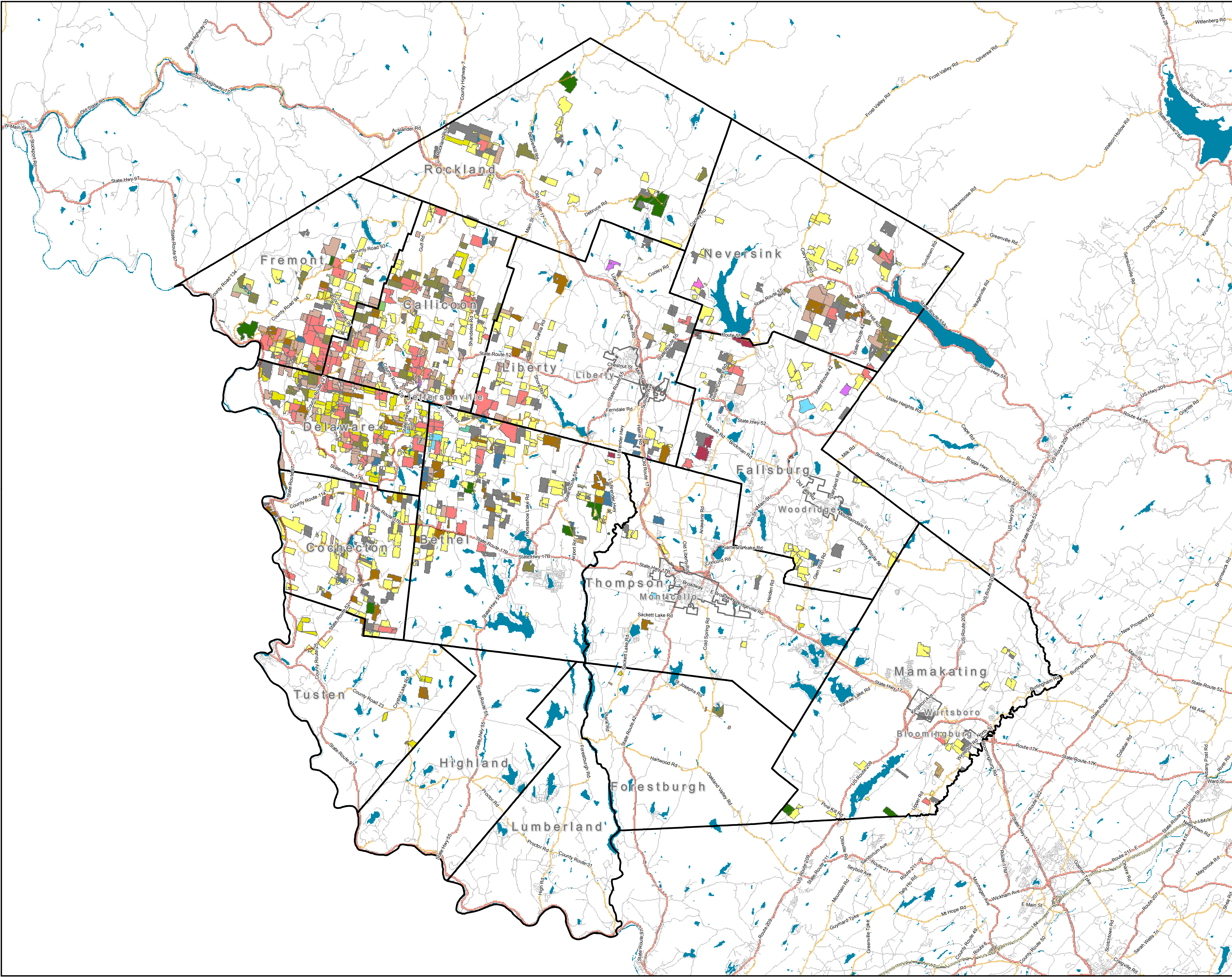


Agricultural & Farmland Protection Plan MAPS

December 2014



Sullivan County Agricultural and Farmland Protection Plan



Farms

- Towns
- Villages

Roads

- Interstate Highway
- State Route
- County Road
- Local Road

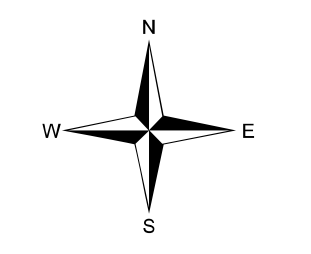
Water

- Water

Farms by Property Class

- Agricultural-Crops
- Agricultural-Dairy
- Agricultural-Horse Farm
- Agricultural-Livestock
- Agricultural-Nursery Specialty
- Agricultural-Poultry
- Agricultural-Other
- Agricultural-Vacant Land
- Commercial-Greenhouse
- Other Commercial or Industrial
- Community and Public Services
- Recreation and Entertainment
- Residential-Agricultural
- Other Residential
- Vacant Land-Agricultural
- Other Vacant Land
- Wild, Forested, Conservation Lands and Public Parks-Private


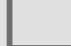

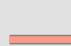
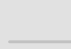



Map Date:
1-12-2015



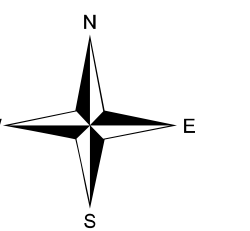
Nan Stolzenburg, AICP - www.planningbetterplaces.com
152 Stolzenburg Road, Berne, NY 12023
Don Meltz, Planning and GIS - www.donmeltz.com

Sullivan County Agricultural and Farmland Protection Plan

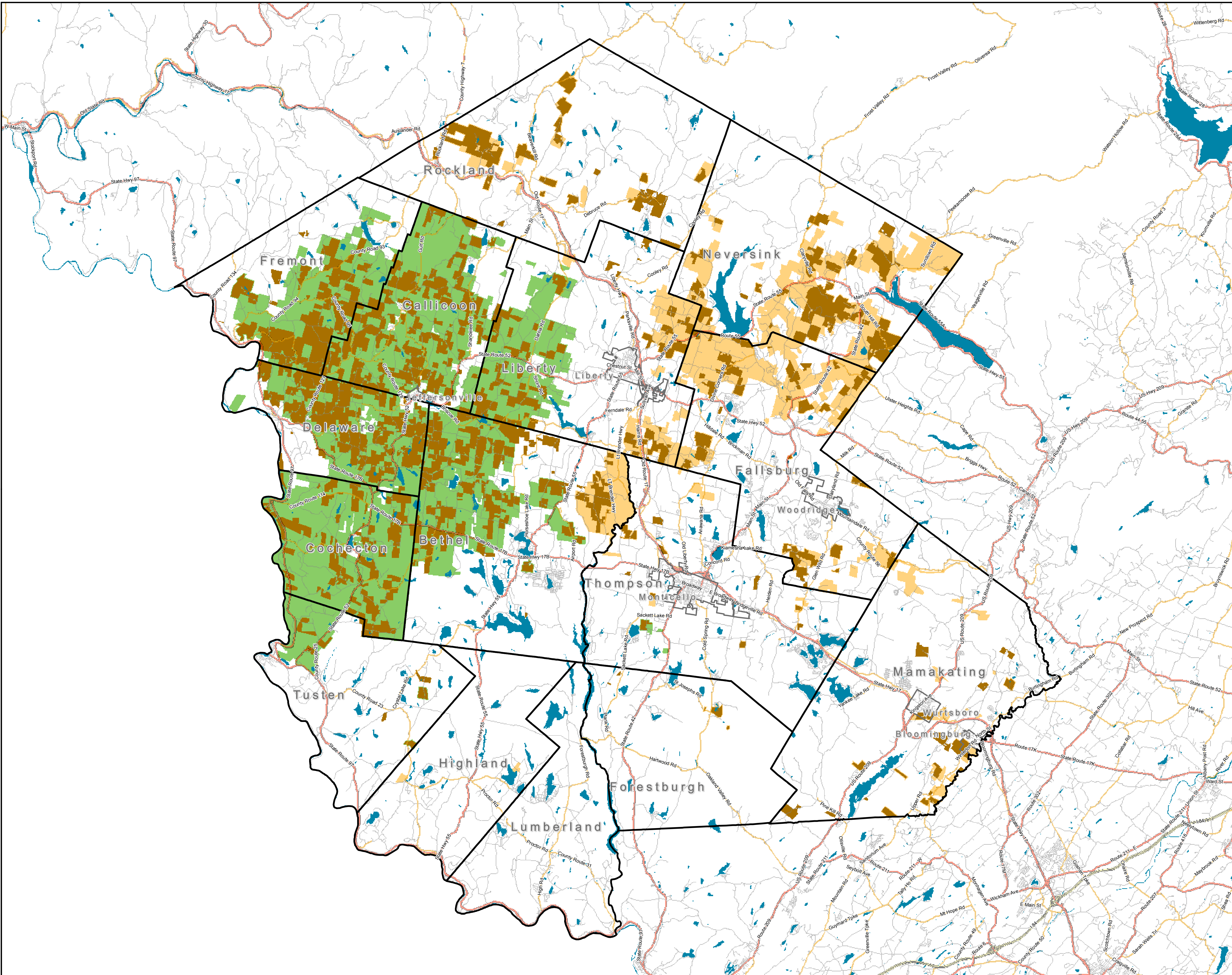
Agricultural Districts

-  Towns
-  Villages
- Roads**
-  Interstate Highway
-  State Route
-  County Road
-  Local Road
-  Water
- Farms**
-  Farms
- Agricultural Districts**
-  Ag District 1
-  Ag District 4

Map Date:
1-12-2015


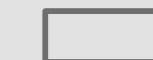



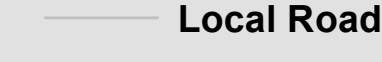





Nan Stolzenburg, AICP - www.planningbetterplaces.com
152 Stolzenburg Road, Berne, NY 12023
Don Meltz, Planning and GIS - www.donmeltz.com

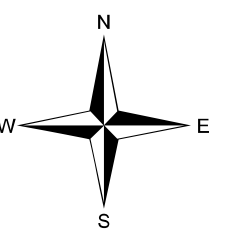


Sullivan County Agricultural and Farmland Protection Plan

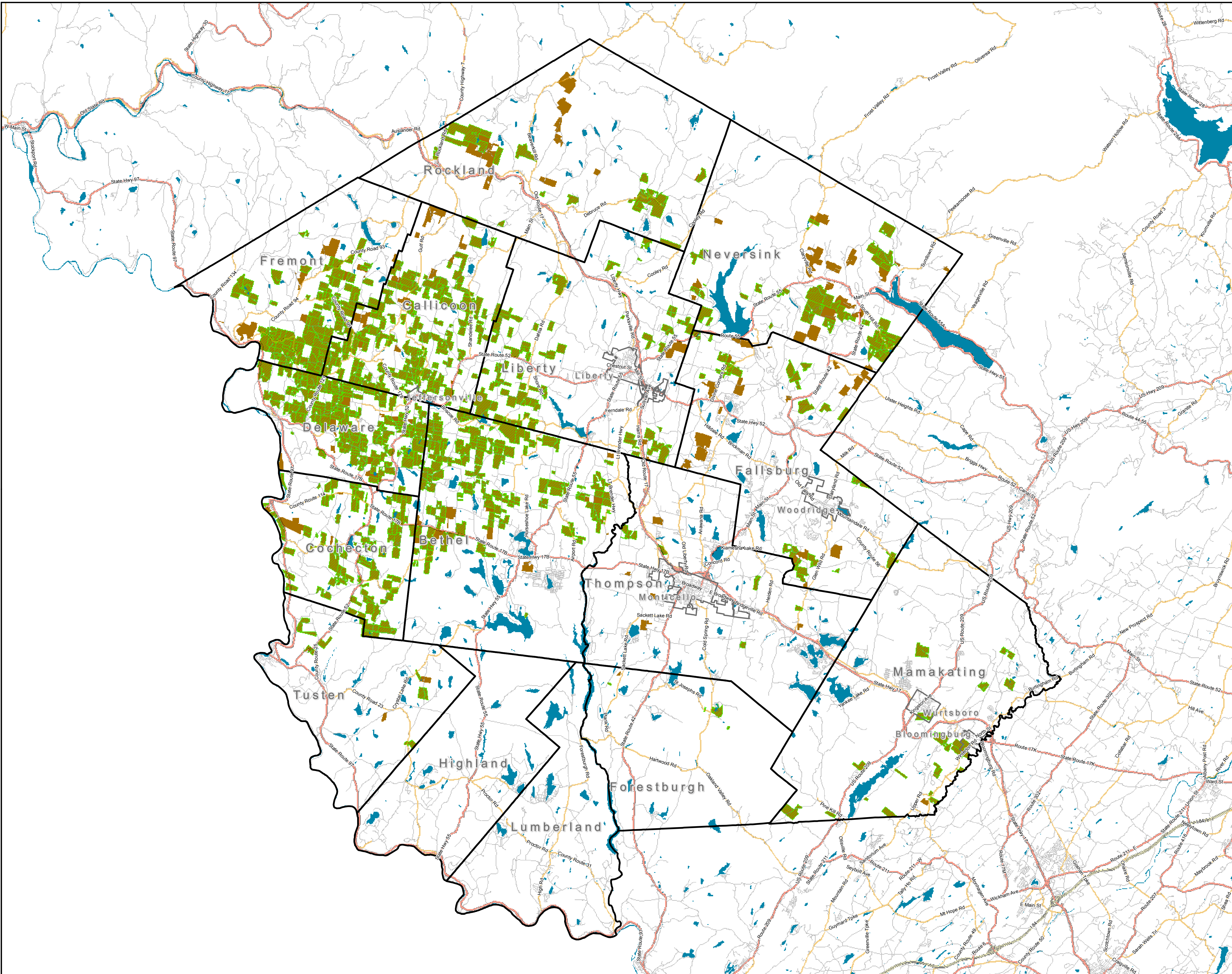
Agricultural Assessments

-  Towns
-  Villages
- Roads**
-  Interstate Highway
-  State Route
-  County Road
-  Local Road
- Water**
-  Water
- Farms**
-  Farms
-  Farms with Ag Assessments

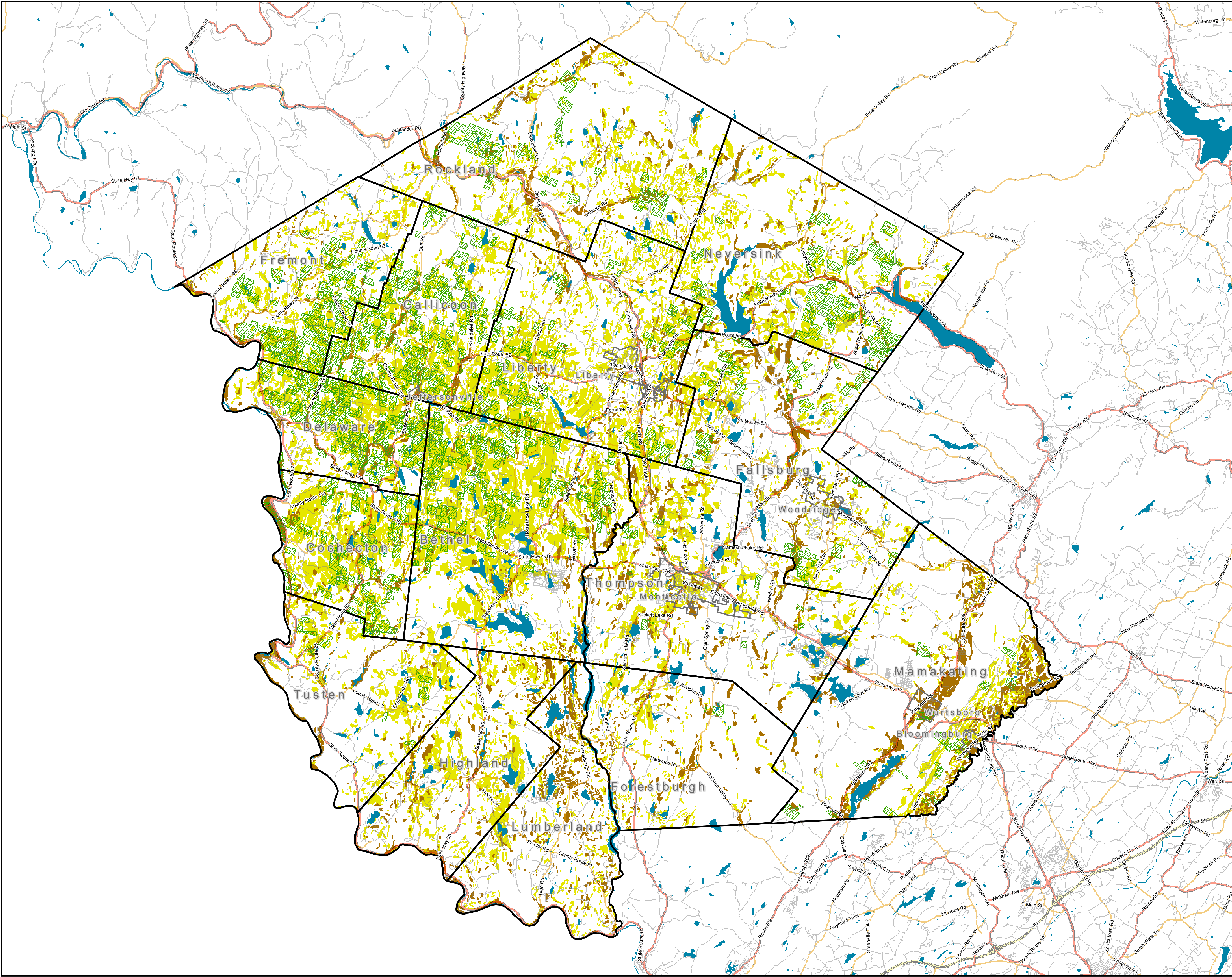
Map Date:
1-12-2015



Nan Stolzenburg, AICP - www.planningbetterplaces.com
152 Stolzenburg Road, Berne, NY 12023
Don Meltz, Planning and GIS - www.donmeltz.com



Sullivan County Agricultural and Farmland Protection Plan



Agricultural Soils

- Towns
- Villages

Roads

- Interstate Highway
- State Route
- County Road
- Local Road

Water

- Water

Farms

- Farms

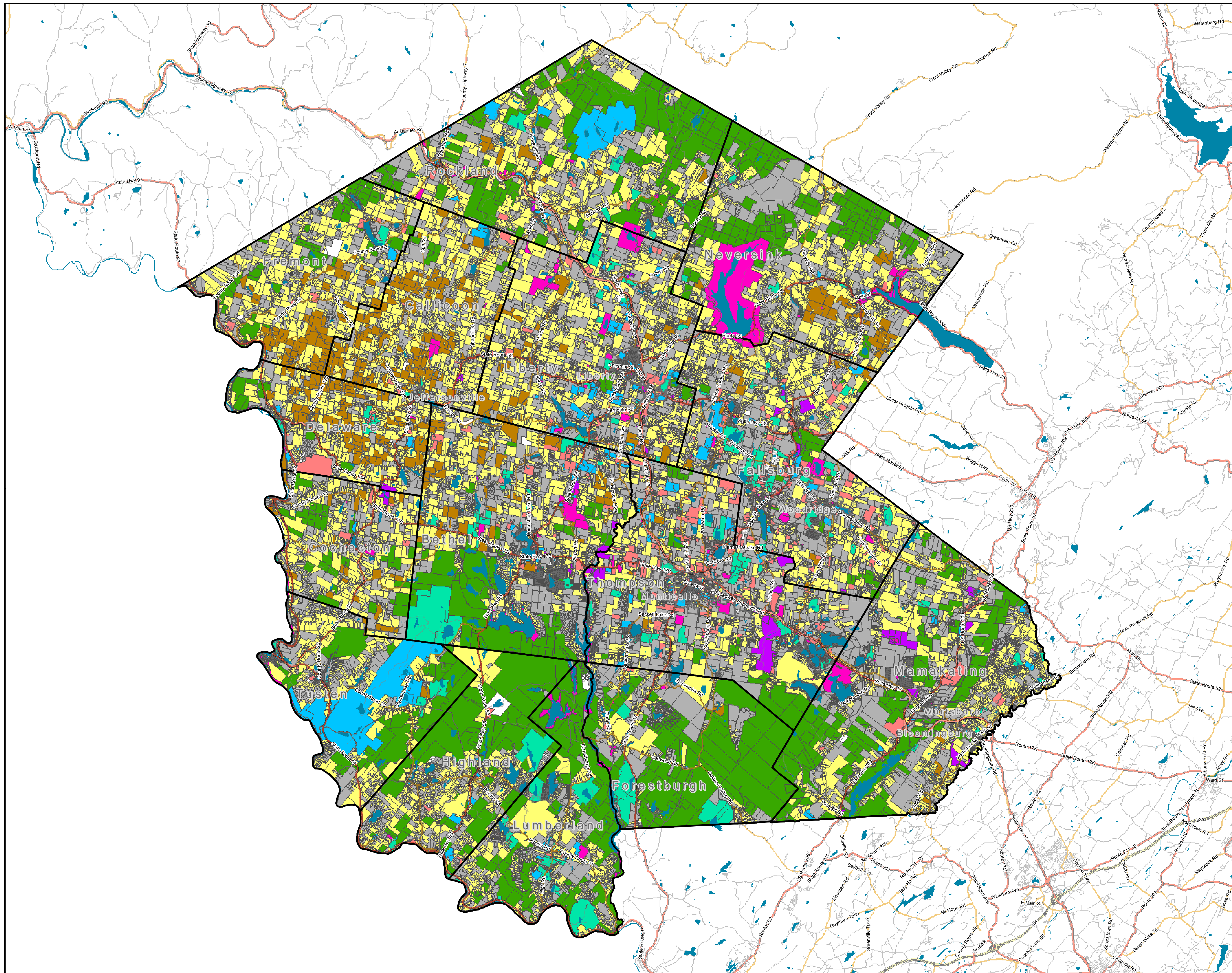
Agricultural Soils

- Prime Farmland
- Soils of Statewide Importance



Nan Stolzenburg, AICP - www.planningbetterplaces.com
152 Stolzenburg Road, Berne, NY 12023
Don Meltz, Planning and GIS - www.donmeltz.com

Sullivan County Agricultural and Farmland Protection Plan



Property Class

- Towns
- Villages

Roads

- Interstate Highway
- State Route
- County Road
- Local Road

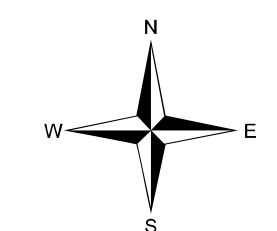
Water

- Water

Property Class

- Agricultural
- Residential
- Commercial
- Industrial
- Community Services
- Public Services
- Recreation and Entertainment
- Wild, Forested, Conservation Lands and Public Parks
- Vacant Land
- UnKnown

Map Date:
1-12-2015



**Community Planning &
Environmental Associates**

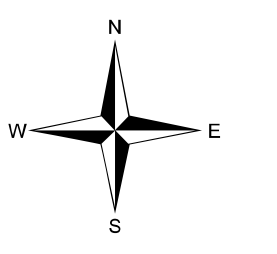
Nan Stolzenburg, AICP - www.planningbetterplaces.com
152 Stolzenburg Road, Berne, NY 12023
Don Meltz, Planning and GIS - www.donmeltz.com

Sullivan County Agricultural and Farmland Protection Plan

Protected Open Space

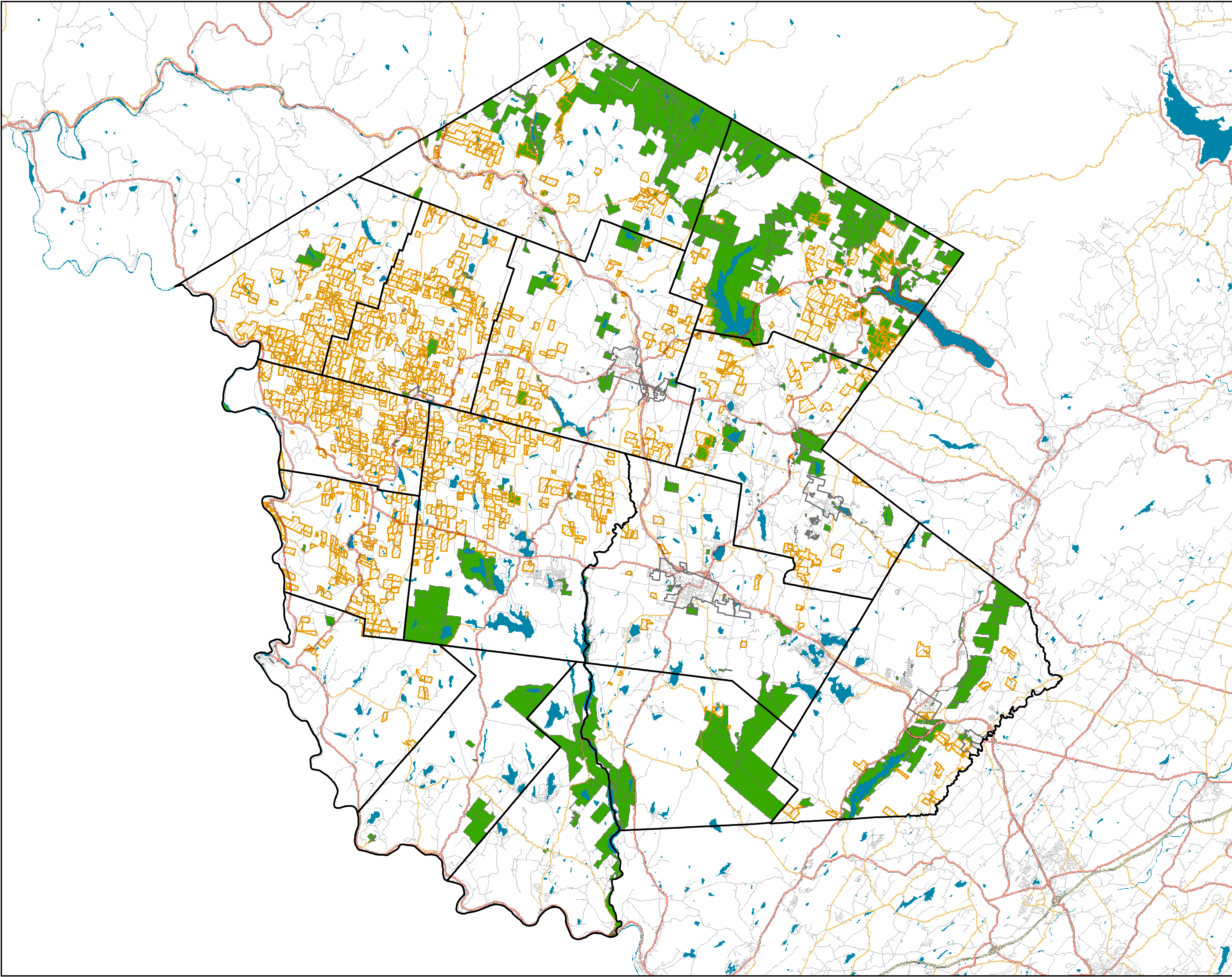
- Towns
- Villages
- Roads
 - Interstate Highway
 - State Route
 - County Road
 - Local Road
- Water
- Farms
 - Farms
 - Parks, Open Space, Public Areas, Private Conservation Easements or other public or private lands protected from development

Map Date:
1-12-2015



**Community Planning &
Environmental Associates**

Nan Stolzenburg, AICP - www.planningbetterplaces.com
152 Stolzenburg Road, Berne, NY 12023
Don Meltz, Planning and GIS - www.donmeltz.com



Sullivan County Agricultural and Farmland Protection Plan

Priority Farmland

- Towns
- Villages
- Roads
 - Interstate Highway
 - State Route
 - County Road
 - Local Road
- Water
- Priority Farmland
 - Higher Score = Higher Priority
 - 60 - 79
 - 45 - 59
 - 30 - 44
 - 0 - 29

Map Date:
1-12-2015

