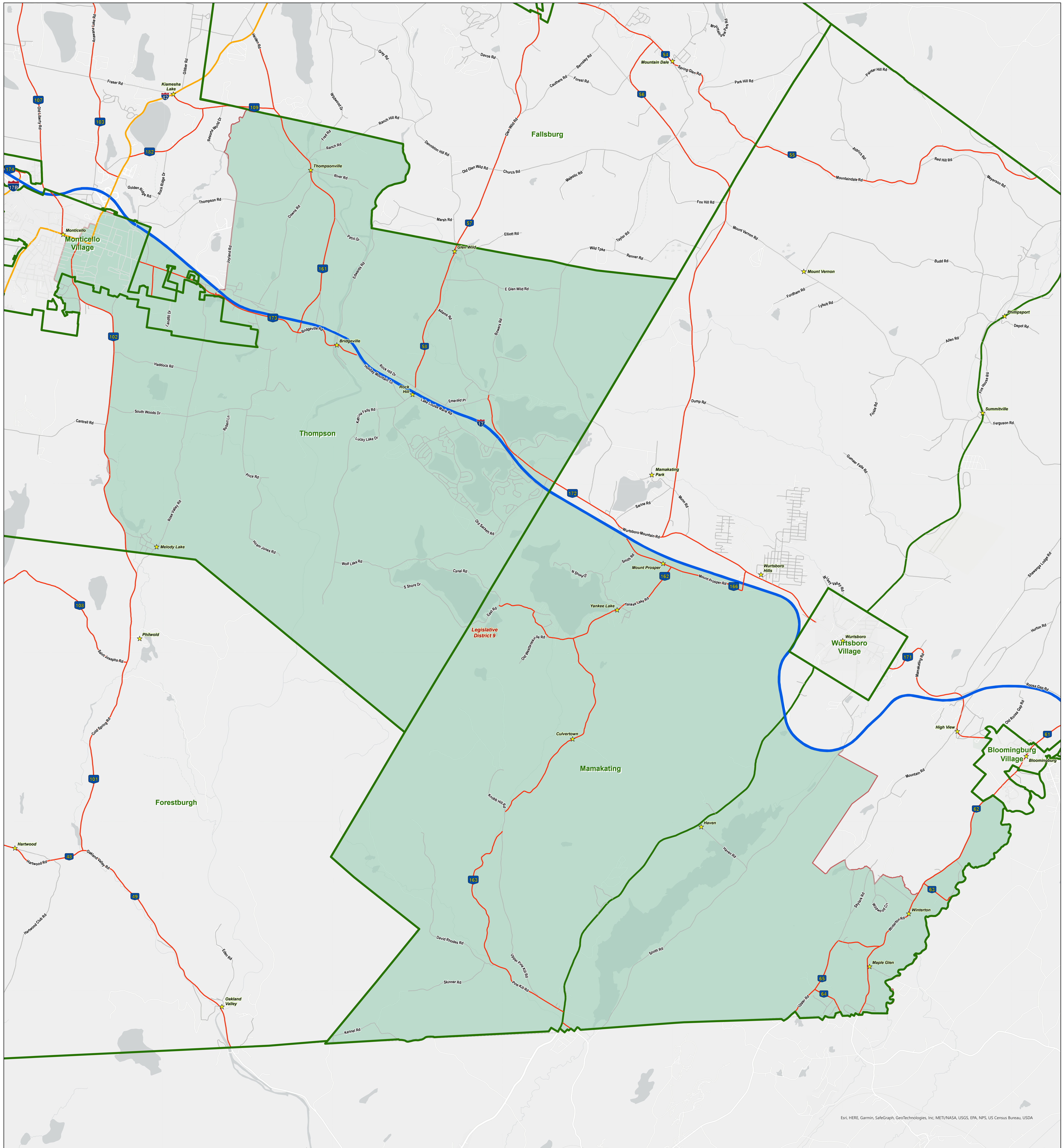


Legislative District 9 Sullivan County, NY



Esri, HERE, Garmin, SafeGraph, GeoTechnologies, Inc, METI/NASA, USGS, EPA, NPS, US Census Bureau, USDA

**Division of Information Technology Services
GIS Program
Sullivan County Government Center**

100 North Street
Monticello, NY 12701

Phone: (845) 807-0110



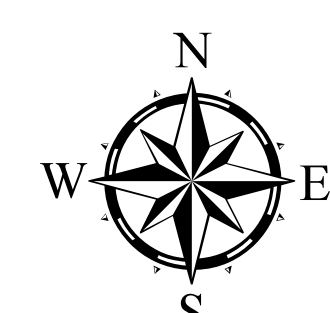
| Legend | | | |
|--------|------------------------|--|------------------------|
| | Hamlets & Villages | | Legislative District 5 |
| | Municipalities | | Legislative District 6 |
| | Roads | | Legislative District 7 |
| | Federal Route | | Legislative District 8 |
| | Interstate | | Legislative District 9 |
| | State Route | | |
| | County Road | | |
| | Town Road | | |
| | Village Road | | |
| | Legislative District 1 | | |
| | Legislative District 2 | | |
| | Legislative District 3 | | |
| | Legislative District 4 | | |

Redistricting boundaries to take effect in January 1, 2024 and are valid until the next (2030) U.S. Census figures are released.

CREDITS: Main Street Communications of Iowa; Sullivan County RPS

This map was designed for visualization of the approximate boundaries of legislative districts in Sullivan County.

DISCLAIMER: Sullivan (County) makes no representation as to the accuracy of the information in the mapping data. Sullivan County specifically provides this information as is. Sullivan County expressly disclaims responsibility for damages or liability, whatsoever, that may arise from the use of this map.



1:31,000

1 inch = 0.5 mile(s)

Date: 5/20/2023